



S **schütze**
schuhe
MADE IN AUSTRIA - SINCE 1925





**PREMIUM
QUALITY**
IN TRAGWEIN



**Dear business partners,
dear customer,**

More than ninety years of shoe manufacture in Tragwein did not happen all on its own. My predecessors laid the foundations for that development through their hard work and vision.

The family business founded by my grandfather in 1925 experienced a host of ups and downs in uncertain times and has survived major political and social upheavals.

From the outset, we have striven to manufacture high-quality shoes in a difficult marketplace.

To achieve that goal, high-quality materials, a comfortable fit, skilled workmanship and a passion for the craft of shoemaking are the prerequisites.

The company has been able to hold its own through respecting those key values, so that now, more than ever before, it can look forward to a successful future.

Our long-term objectives include staying agile, planning ahead in structures and technology, keeping our employees motivated and reliable, and a steady rate of growth.

We also consider it our responsibility to behave sus-

tainably in social matters and towards the environment. One of our key tasks is to continually improve the quality of our products and service for our customers, since it is they who are our true employers.

Owing to our ongoing expansion, we are able to guarantee operations in Tragwein for our employees and thus continue to contribute to the development of our traditional home. By doing so, we also lay the foundations for the next generation and can be sure that the **SCHÜTZE SCHUHE** brand will live on.

Thank you for your loyalty and trust in us.

In future, we will continue our commitment to our motto

„SAFETY WITH COMFORT“

Best wishes from the beautiful Austrian Mühlviertel,

THOMAS SCHÜTZENEDER

TIME>

1892



FOUNDATION STONE IS LAID IN MISTLBERG NEAR TRAGWEIN

The foundation of the family run company Schützeneder dates back to 1892. This was the era when the escalator was registered for patent, toothpaste was sold for the first time and Coca-Cola was founded. In 1892, the master shoemaker Simon Schützeneder founded a shoemaker's workshop in Mistlberg, which was still an independent municipality adjacent to Tragwein at that time. The founder had four sons, who all trained in their father's profession and gained their master's certificate.

1925



FOUNDATION BETWEEN THE WARS IN THE TOWN OF TRAGWEIN

1925 Seven years after World War I, the eldest son, master shoemaker Karl Schützeneder, bought a house on the main square in Tragwein, where he established a shoemaker's workshop. After a short time he employed some craftsmen and apprentices.

1965



THE NEXT GENERATION DURING THE ECONOMIC BOOM

In 1965, Karl's son Willibald Schützeneder took over the company and changed the manufacturing to series production. He enlarged the workshop on the main square of Tragwein and produced shoes for the Austrian shoe retail trade. In 1982, the company specialised in flexibly stitched uniform shoes and started to supply all Austrian public authorities and state-owned enterprises.

1991



KEY CHOICES FOR THE 21ST CENTURY

1991 marked a new phase, when Willibald's son Thomas Schützeneder entered the business. The production was directed to safety and professional shoes for trade, industry, the building and related trade. In 1996 a proprietary patent was filed and obtained, which included a process for the rational production of shoes with rubber-PUR soles. In 1998 a direct soling system for rubber-PUR was purchased to produce comfortable and extremely durable safety shoes according to the patented method. The production was automated by this measure to secure the production site of Tragwein.

2002



A NEW STEP IN THE FUTURE

From 2002 to 2003 new company premises were built on the edge of Tragwein in order to fully exploit the advantages of the new technology. Logistics and distribution were expanded correspondingly. After having moved to the new company premises in 2003, automatisisation was further intensified with three six-armed robots.

In 2008 the new asphalt shoe came onto the market after 2 years of development setting new standards in this range of requirements.

2009



HARD WORK IS REWARDED

2009 Awarding of the Upper Austrian business award „PEGASUS“

2015 Awarding of the Austrian national code of arms for exceptional business achievement

2012



DEVELOPMENTS IN MEDICAL DIRECTION

In 2012, a system for processing orthopaedic safety shoes was developed in cooperation with the Austrian orthopaedic specialist dealer Medwalker, which was launched under the brand name SCHÜTZE-MED. This was the starting point for the distribution of modular systems for creating orthopaedically modifiable safety shoes according to ÖNORM Z 1259.

2013



TECHNOLOGY. TECHNOLOGY. TECHNOLOGY.

2013 Development of a new sole generation in polyurethane and purchase of an 18 digit direct PUR-soling system for the production of light and fashionable safety shoes.

2018 Rebuilding and adaptation of the 18-digit PUR-direct-soling-plant. Development of new product lines.

<TRAVEL



 **schütze**
schuhe
MADE IN AUSTRIA - SINCE 1925

RE> <SPONS> <IBILITY WITH HEART

There are many steps to be considered from the procurement of the raw materials to the finished shoes on the user's feet. **SCHÜTZE-SCHUHE** as a brand name sets great value upon acting responsibly in all fields of duty. We stand for top-level social and environmental standards. This applies for our production site in Tragwein, Upper Austria, as well as for the suppliers of pre-products.

In order to observe this responsibility, **SCHÜTZE-SCHUHE** has been working with selected and reliable partners for many years. Those who buy and wear **SCHÜTZE-SCHUHE** can do this with the good feeling:

That the environmental standards are observed, that people are not exploited and that sustainability and responsibility are taken seriously.

We as the manufacturer owe this to our tradition, attitude and brand name. You as the customer wear healthy shoes and contribute to a part of our future.

**ASPECTS &
PER>
<SPECTIVES**

**MEDICAL &
PHYSIO>
<THERAPY**

MEDICAL ASPECT

“As an occupational physician, it is important to me that employees who have to wear safety shoes at work due to hazards or stresses and strain are provided with the ideal footwear.”

The fact of the matter is that these individuals wear safety shoes more often than any other type of footwear. This emphasises the importance of a good quality shoe.

The fit is the key factor in determining how the employee feels about wearing the shoes. In my opinion, the most important criteria when selecting safety shoes are that the steel toe cap is wide enough, the heel fits well, the middle sole area is well supported, cushioning can be felt, and there is excellent roll-over when walking.

If the materials allow for the feet to enjoy a pleasant and healthy environment, the wearer is even more likely to find the shoe acceptable.”

DDR. KARL HOCHGATTERER, M.SC.

Specialist occupational physician
Occupational Medical Centre, Perg

PHYSIOTHERAPY PERSPECTIVE

“For 8 hours per day and up to 2,000 hours per year, safety shoes protect the health of employees in the workplace.

To provide our outermost joint, the ankle joint, with sufficient protection, as well as stability and mobility, it is crucial for safety shoes to have an anatomical foot bed and support for fallen arches (pronation support). Foot malpositions and imbalance can slowly creep in over the years. Our ability to move comes from a number of myofascial lines that run throughout the body (the myofascial network) that bring together separate joints with the aim of controlling their functionality.

As the structure of the (body's) statics travels in the direction of bottom to top via the axis of the leg, it makes it even more important to wear high-quality, ergonomic safety shoes in order to avoid complaints and stress damage later in life to the ankle joint, knee, hips, and over the back as far as the shoulder girdle and up to the spine.

Key criteria for the ideal work shoe include a joint stabiliser in the outer sole, but also moveable elements in the area surrounding the ball of the foot. A functional approach when thinking about your footwear allows you to actively consider your health - because

“FUNCTION SHAPES STRUCTURE”

THOMAS HEBENSTREIT, PT, SPT

Sports physiotherapist and personal trainer,
Physiotherapist for various national teams
Olympic therapist

(A) RUBBER-PUR BASE ASSEMBLY

The rubber-PUR sole is connected to the shaft by the direct soling system with the 18 digit polyurethane reaction moulding plant and the patented „Sealing Sole Edge System“. Thanks to the excellent physical properties of nitrile rubber and polyurethane foam, we are able to produce extremely durable and comfortable safety shoes.

**(B) TPU-PUR BASE ASSEMBLY**

The direct soling system for TPU-PUR soles includes a two-density process for skimming TPU-hard-wearing outer- and PUR-midsoles from one dense and one soft part of elastic TPU/polyurethane via the 18 digit polyurethane direct injection system.

**(C) PINCH PRODUCTION PLANT
(AGO pinching system)**

During the adhesive pinching production of safety shoes in the AGO process, finished soles from the materials nitrile rubber, polyurethane or a combination of both materials are glued to the shaft.



STATE-OF-THE-ART PRODUCTION FACILITIES

PRODUCTION IS THE HEART OF SCHÜTZE-SCHUHE

We produce our safety shoes according to three different methods of assembly. The human element is a priority in our company, especially in the partially automated production. This is where the employees' qualification, knowledge and motivation are the foundation of success for **SCHÜTZE-SCHUHE**.

SCHÜTZE-SCHUHE is not willing to compromise when choosing high-quality materials for the shaft production. In all our model ranges, we use natural orthopaedic leather lining, a toe-protection cap in steel, a replaceable cushion inlay with spherical heel and distinct arch support. These excellent shoe components are topped off by the Y-protector, which has been especially developed to protect, support and relieve the feet.

In terms of upper materials, we use high-quality full cowhide leather, nubuck leather, hydrophobic leather, suede leather, small textile inlays, Permair leather, Scotchgard leather und micro-fibre materials.

The outer sole makes the difference. For this reason we adapt the outer sole to the requirements. From the light, comfortable PUR sole to the univer-

sally applicable rubber-PUR sole to the solid rubber sole, we equip our models in a way that they exactly meet the conditions of man and work place combining the requirements and needs.

The brand **SCHÜTZE-SCHUHE** is renowned for high-quality components. Only the fine adjustment and combination of these parts mark the quality of our shoes.

Consistent automation and the use of 5 six-armed robots enable the company **SCHÜTZE-SCHUHE** to produce on the site in Tragwein.

Also in the future we will be committed to the production site of Austria.



JAKOB THURNHOFER
HEAD OF PRODUCTION

Phone: +43 7263 88 323

Fax: +43 7263 88 232 7

Mail: j.thurnhofer@schuetze-schuhe.at



Activation device



Model Sportiv
at the rotary table



Quality assurance



Shoe last



Robot at the rotary table



**schütze
schuhe**

MADE IN AUSTRIA - SINCE 1925

SALES

Selling is not the end of customer service, it's the beginning. Good assistance requires sound training, excellent expert knowledge and good understanding of the customer's requirements for their work place.

All this is the most natural thing for **SCHÜTZE-SCHUHE**, since our support team deals exclusively with the matter of safety shoes.

We are proud of our competent staff, who deal with any imaginable requirements and needs of our customers. We care about your problems to the best of our knowledge and belief in order to find the optimal solution together with you.

However, there is one thing we must not forget. We are talking of personal protective equipment and of the requirement that people who wear PPE should and must stay healthy.

Especially in our fast-moving times, in which things must always be quick and cheap, we consider the time for our customers as a special asset, because they are really important to us.

It is exactly this consultancy and service, which are highly popular with our clients, because they are no longer a matter of course in days like these. You can rely on the fact that we can answer competently even tricky questions.

Based on our long history, the associated success

and especially in regard to our customers' tangible satisfaction we appreciate the personal meeting with customers on site.

Our sales team travels throughout Austria as well as parts of Bavaria and always endeavours to organise everything as conveniently as possible for the clients.

Our shoe-mobile provides quick service on site. This enables us to react quickly and efficiently to many things associated with daily sales business. Whether it is about an exchange, small orders, replacement, samples to wear or similar:

We are at your service, with no ifs and buts.

best regards



ALEXANDER ROITNER
Sales Director

Cellphone +43 660 110 5000
Phone: +43 7263 88 323 22
Fax: +43 7263 88 232 7
Mail: a.roitner@schuetze-schuhe.at

COMPETENCE HAS GOT A NAME



ALFONS HÖTZENDORFER

Linz, Linz-Environs

Cellphone: +43 664 524 8323
Phone: +43 7263 88 323
Fax: +43 7263 88 232 7
Mail: a.hoetzendorfer@schuetze-schuhe.at



DIETER HÖLLER

Upper Austria - Mühlviertel
Lower Austria northwest

Cellphone: +43 664 468 5180
Phone: +43 7263 88 323
Fax: +43 7263 88 232 7
Mail: d.hoeller@schuetze-schuhe.at



GERALD STADLER

Styria, Carinthia East &
Burgenland South

Cellphone: +43 664 515 8865
Phone: +43 7263 88 323
Fax: +43 7263 88 232 7
Mail: g.stadler@schuetze-schuhe.at



MARINA SIEGL-KLEINKNECHT

Vienna & region,
Lower Austria East, Burgenland North

Cellphone: +43 664 330 1949
Phone: +43 7263 88 323
Fax: +43 7263 88 232 7
Mail: m.siegl-kleinknecht@schuetze-schuhe.at



BETTINA BINDREITER

Sales support

Phone: +43 7263 88 323 11
Fax: +43 7263 88 232 7
Mail: b.bindreiter@schuetze-schuhe.at



ANITA REITER

Sales support

Phone: +43 7263 88 323 10
Fax: +43 7263 88 232 7
Mail: a.reiter@schuetze-schuhe.at



CHRISTOPH WALLISCH

Upper Austria East,
Lower Austria West

Cellphone: +43 664 418 4284
Phone: +43 7263 88 323
Fax: +43 7263 88 232 7
Mail: c.wallisch@schuetze-schuhe.at



DIETMAR REITSAMMER

Upper Austria West,
Salzburg North & Salzburg City

Cellphone: +43 664 515 8818
Phone: +43 7263 88 323
Fax: +43 7263 88 232 7
Mail: d.reitsammer@schuetze-schuhe.at



KARL REPAS

The Tyrol, Vorarlberg
Carinthia West, Salzburg South

Cellphone: +43 664 340 9362
Phone: +43 7263 88 323
Fax: +43 7263 88 232 7
Mail: k.repas@schuetze-schuhe.at



MICHAEL SCHERR

Bavaria/Germany

Cellphone: +49 173 454 8978
Phone: +49 8631 36 69 889
Fax: +43 7263 88 232 7
Mail: m.scherr@schuetze-schuhe.at



BARBARA FREUDENTHALER

Sales support

Phone: +43 7263 88 323 21
Fax: +43 7263 88 232 7
Mail: b.freudenthaler@schuetze-schuhe.at



GERLINDE MOSER

Administration
Accounting

Phone: +43 7263 88 323 14
Fax: +43 7263 88 232 7
Mail: g.moser@schuetze-schuhe.at

**FEEL GOOD
INSIDE
& OUT
>>**

**EX>
<PLANATION
>> SYMBOLS**

ANATOMIC 01
3D INSOLE

FIT 02
AKTIVE

FREE 03
TOES

ORTHOPÄDIE 04
LEDERFUTTER

MEHRWEITEN 05
SYSTEM

Y 06
PROTECTOR

WATER 07
PROTECTOR

ESD 08

replaceable cushion inlay with spherical heel and distinct arch support, anatomically formed, moisture regulating, respiratory active, antibacterial & washable

The combination of fit, materials, cushion and the related wearing properties will keep you fit and activ

high & wide FreeToes toe cap in steel, with flexible transition lip

Natural, perforated orthopedic leather, extremely absorbent, ensures a pleasant feel-good climate. In summer, as well as in winter.

SHOE-SHOES are available in 3 different widths. Every person has a different perceive in terms of shoe size.

Shoe component designed by **SCHÜTZE-SCHUHE** - it supports, protects and relieves your feet

WATER PROTECTOR LEATHER satisfies more than the standard requires. Water, oil and dirt resistant.

Footwear tested according to EN 61340-4-3. Protection for electrical components from electric discharge. Labelling: ESD Icon



SCHÜTZE-SOLE-TECHNOLOGY

RIGHT SELECTION MAKES THE DIFFERENCE

DUO-SOFT-ACTIVE (Rubber/PUR)

The patented sole system combines the good properties of rubber (nitrile rubber) and PUR (polyurethane) soles. The rubber-PUR sole is a combination of the technically and physically excellent properties of the sole mould in nitrile rubber with the ideal wearing properties of the midsole in polyurethane. The result is a high-quality sole for safety shoes with universally applicable uses.



SCHÜTZE-TOUGHNESS-INDEX

easy workings ↔ difficult workings

SOFT-STEP PRO (2-layers TPU/PUR)

The TPU / PUR sole is a very common sole in the field of safety shoes. An outsole made of compact TPU and a midsole made of foamed, soft polyurethane underline the very good wearing properties of the SCHÜTZE-SCHUHE model series.

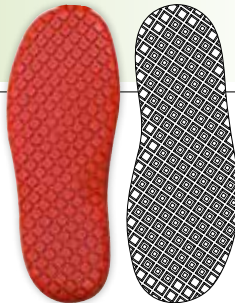


SCHÜTZE-TOUGHNESS-INDEX

easy workings ↔ difficult workings

DUO-SOFT-GRIP (rubber/PUR)

The profile, material and design of the roofer rubber PUR GRIP sole are a development, which meets the high requirements for working on a roof, especially the slip resistance. Studded profile with sharp edges, wear-resistant nitrile rubber, flexibility and low weight characterize this sole. A special design for the new generation of roofer shoes.

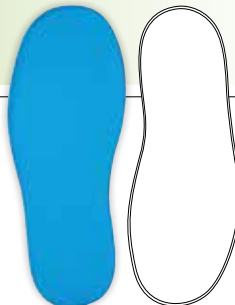


SCHÜTZE-TOUGHNESS-INDEX

leichte Tätigkeiten ↔ schwere Tätigkeiten

DUO-SOFT-ASPHALT (rubber/PUR)

This rubber-PUR sole is a combination of the technically and physically excellent properties of the sole mould in nitrile rubber with the ideal wearing properties of the midsole in polyurethane. This sole is perfectly suited for prolonged work on hot surfaces thanks to additional high heat insulation (140 - 150°C). No profile and plain sides make this sole the perfect solution for tarring shoes/asphalt shoes.



SCHÜTZE-TOUGHNESS-INDEX

easy workings ↔ difficult workings

Y-PROTECTOR AN INNOVATION OF SCHÜTZE-SCHUHE

The human foot consists of 28 bones. 16 toe bones, 16 metatarsals and 7 tarsal bones. Metatarsals and tarsal bones are linked by taut ligaments and immobile in contrast to the toes.

1. PROLONGED STANDING

If these ligaments are under a lot of strain due to prolonged standing, heavy weight or genetically determined weakness, the longitudinal arch begins to drop, which leads to fallen arches and consequently a flat foot with all the inconvenient effects on general health. The Y-protector with its stiffener forms a bridge from the heel bone to the ball of the foot, which avoids the falling of the longitudinal arch of the foot.

2. SAFE WALKING

When walking on uneven or inclined surfaces and when the foot is bent in all directions, the Y-protector protects the tarsal bones from too much distortion and deformation, avoiding aching feet such as burning foot soles as well as muscle and tendon pain in the calves.

3. FOOTING STABILITY

The Y-protector increases the footing stability of the foot without impairing the particular damping characteristics of the sole. The optimal distribution of occurring pressure and impact force over the whole foot relieves the foot muscles and reduces the risk of injuries to the heel bone.

SUPPORTS THE LONGITUDINAL ARCH of the foot and avoids formation of fallen arches or a flat foot.

PROTECTS THE FOOT FROM DEFORMATIONS on uneven floors and when climbing ladders.

RELIEVES THE FOOT MUSCLES by better pressure distribution as well as safe and solid footing stability.



Fig.: The Y-protector is firmly embedded in a soft PU core between outer sole and insole.



**PERFECT
FITTING
FROM TRAGWEIN**





SHOE TECHNOLOGY IN TRAGWEIN



SMART SAFETY BOOT

INCREASED SAFETY THROUGH DIGITAL MANAGEMENT

Hazard prevention is at the heart of safety shoes. That means that PPE is intended to protect people from hazards or workplace accidents which could not have been prevented by technical or organisational measures. Personal protective equipment should become digitally networked in the future to increase its efficiency and to put an end to analogue management and maintenance.

Analogue management and PPE checks are still regularly performed in many companies. Safety experts armed with a clipboard and taking handwritten notes to later be transferred to a computer are an all too common sight. That such tasks take twice as long is evidence enough to show how inefficient manual processes can be. In the age of the smartphone, tablet and other smart devices, it is only natural that data can or will be collected directly in a digital fashion.

The above conveniences and saved resources are just some of the advantages of networked PPE. An even more pivotal aspect which provides added value to the quality of personal protective equipment is the unique electronic identification of PPE products: In which company division is which equipment in use or allowed to be used, which PPE does a specific employee have, when must maintenance and inspection be carried out? All this information, which is important to safety experts, is available at the touch of a button in the world of smart occupational safety.

REAL-LIFE DIGITAL SAFETY SHOES

In reality, it might look a little like this: An employer purchases safety shoes for his employee John Doe. The production date, serial number, manufacturer's name, standard etc. for the shoe are stored on an integrated RFID chip, a QR code, etc. The serial number is assigned to John Doe and saved to a database.

In his database profile, safety experts can see any PPE assigned to John Doe next to its production data, safety functions, manufacturer details, standards, applications and similar.

The entire lifespan of John Doe's PPE can be managed and recorded through digital networks: from the date it is assigned through to inspection, maintenance and finally the time it is replaced. Any relevant information is available 24/7 and ready to be called from any location and can also be supplemented with additional data such as images or text documents. Documentation required for legal purposes, as well as evidence of employee training will also be fully up-to-date at all times.

THANKS TO OUR PRODUCTION METHODS, WE CAN ALSO MAKE SMART SAFETY SHOES FOR YOUR COMPANY. GET IN TOUCH, I'D BE DELIGHTED TO ASSIST YOU IN ANY WAY!

ALEXANDER ROITNER
Project Manager PSA 4.0



Article **1782**
SPORTIV ESD SA **S1**



Article **1182**
SPORTIV ESD HS **S2**



Article **1783**
SPORTIV ESD SA **S1P**



Article **2782D**
FEELING ESD SA **S1**



Article **2282**
FEELING ESD HS **S2**



Article **2282D**
FEELING ESD HS **S2**



Article **4346**
DACHDECKERPROFI KH **O3**



Article **5243**
TREAKER ESD HS **S3**



Article **5443**
TREAKER ESD KH **S3**



Article **6232**
ASPHALTPROFI HS **S2**



Article **6432**
ASPHALTPROFI KH **S2**



Article **7782**
KOMFORT ESD SA **S1**



Article **7213**
KOMFORT ESD HS **S1P**



Article **7613**
KOMFORT ESD HS **S3**



Article **7413**
KOMFORT ESD KH **S3**



Article **1183**
SPORTIV ESD HS **S3**



Article **1383**
SPORTIV ESD KH **S3**



Article **2782**
FEELING ESD SA **S1**



Article **3283**
ALLROUND ESD HS **S3**



Article **3483**
ALLROUND ESD KH **S3**



Article **4343**
DACHDECKERPROFI KH **S3**



Article **6213**
BAUPROFI HS **S3**



Article **6413**
BAUPROFI KH **S3**



Article **6813**
STAHLBAUPROFI ESD KH **S3**



Article **7682**
KOMFORT ESD HS **S2**



Article **7482**
KOMFORT ESD KH **S2**



Article **7713**
KOMFORT ESD SA **S1P**



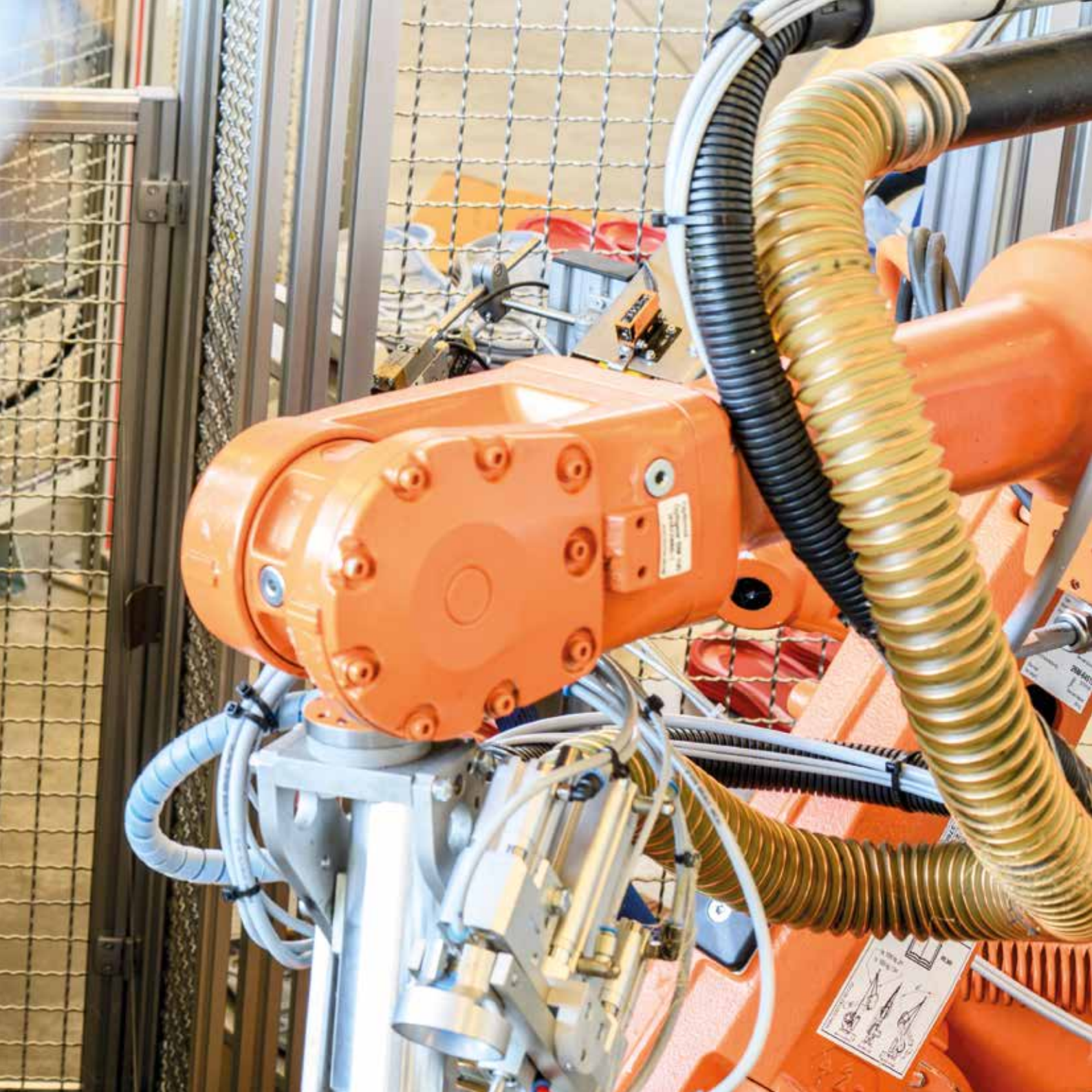
Article **8313**
TOPTECH KH **S3**



Article **8513**
TOPTECH ST **S3**



HIGHTECH
IN TRAGWEIN





Order number 1383 (S3)

Model **SPORTIV** ESD KH **S3**

Norm EN ISO 20345:2011
ÖNORM Z 1259:2017/DGUV 112-191

Protective function



Order number 1182 (S2), 1183 (S3)

Model **SPORTIV** ESD HS **S2**
SPORTIV ESD HS **S3**

Norm EN ISO 20345:2011
ÖNORM Z 1259:2017/DGUV 112-191

Protective function



Order number 1782 (S1), 1783 (S1P)

Model **SPORTIV** ESD SA **S1**
SPORTIV ESD SA **S1P**

Norm EN ISO 20345:2011
ÖNORM Z 1259:2017/DGUV 112-191

Protective function



SPORTY & FIT IN THE WORKING WORLD



Sporty design and functionality are the properties of the sportive series - a combination of the modern working world and active leisure time.

The combination of fit, materials, cushion and the related wearing properties ensures that you are still fit & active after work. **FIT & ACTIVE WITH ALL SCHÜTZE MODEL SERIES.**



FEATURES



DESCRIPTION

UPPER LEATHER
LINING LEATHER
TOE-PROTECTION CAP
INSOLE (S1 & S2)
INSOLE (S1P & S3)
CUSHION

SOLE

soft velours leather and textile inlays, thickness from 1.9 to 2.1 mm
natural, perforated orthopaedic leather lining, thickness from 1.0 to 1.4 mm
high & wide FreeToes toe cap in steel, with flexible transition lip
genuine leather, herbal tanned, thickness from 2.4 - 2.7 mm
puncture proof, metal-free fabric
replaceable cushion inlay with spherical heel and distinct arch support, anatomically formed, moisture regulating, respiratory active, antibacterial & washable
SOFT-STEP-PRO double layer sole (TPU/PUR)
outer sole made of compact TPU
midsole of shock-absorbing, foamed PUR
antistatic
oil and fuel resistant
slip resistant (SRC) according to EN ISO 20347:2012
heat resistant up to 120°C

SIZES

38 - 48



Order number

2282 (S2)

Model
Norm

FEELING ESD HS **S2**

EN ISO 20345:2011

ÖNORM Z 1259:2017/DGUV 112-191

Protective function



CI-SRC



Order number

2782 (S1)

Model
Norm

FEELING ESD HS **S1**

EN ISO 20345:2011

ÖNORM Z 1259:2017/DGUV 112-191

Protective function



CI-SRC



FEELING COMBINES INNOVATION, TRADITION AND WEARING COMFORT



The upper material in breathable, extra light microfibers together with our natural orthopaedic leather result in an incomparable wearing comfort. This unique combination of materials guarantees dry feet, because humidity is absorbed by the orthopaedic lining, which can dry through the absolutely breathable microfiber material.



FEATURES



DESCRIPTION

UPPER MATERIAL

Microfiber

LINING LEATHER

natural, perforated orthopaedic leather lining, thickness from 1.0 to 1.4 mm

TOE-PROTECTION CAP

high & wide FreeToes toe cap in steel, with flexible transition lip

INSOLE

genuine leather, herbal tanned, thickness from 2.4 - 2.7 mm

CUSHION

replaceable cushion inlay with spherical heel and distinct arch support, anatomically

formed, moisture regulating, respiratory active, antibacterial & washable

SOFT-STEP-PRO double layer sole (TPU/PUR)

SOLE

outer sole made of compact TPU

midsole of shock-absorbing, foamed PUR

antistatic

oil and fuel resistant

slip resistant (SRC) according to EN ISO 20347:2012

heat resistant up to 120°C

SIZES

38 - 48



Order number

2282D (S2)

**Model
Norm**

FEELING ESD HS S2

EN ISO 20345:2011

ÖNORM Z 1259:2017/DGUV 112-191

Protective function



CI-SRC



Order number

2782D (S1)

**Model
Norm**

FEELING ESD SA S1

EN ISO 20345:2011

ÖNORM Z 1259:2017/DGUV 112-191

Protective function



CI-SRC



**S schütze
schuhe**

MADE IN AUSTRIA - SINCE 1925

Ladies choice



PERFECT FIT THANKS TO REAL WOMEN'S LASTS

The detail makes the difference. At first glance one could think that women's models are the same as men's models.

But this is not true, WOMEN'S MODELS BY SCHÜTZE ARE NOT JUST SMALL MEN'S MODELS!

A key factor in **SCHÜTZE-SCHUHE**'s success certainly is the proper fit and the resulting wearing comfort.

For financial and manufacturing reasons, many market competitors scale men's lasts to smaller sizes. The consequence is a bad fit for women, because women's feet are not men's feet. Wo-

men's feet differ from those of men in the heel and ball area. On the whole women's feet are much slender than those of men.

IT'S THE FIT THAT COUNTS

SCHÜTZE-SCHUHE has developed dedicated women's lasts, which are perfectly adapted for the requirements of women's feet. In this way we achieve a perfect fit with our women's models and consequently greater wearing acceptance with women.

***„DO NOT ACCEPT COMPROMISE,
BECAUSE WE DON'T.“***

FEATURES



OSD
ORIGINAL SCHÜTZE DAMENLEISTEN

DESCRIPTION

UPPER MATERIAL

Microfiber

LINING LEATHER

natural, perforated orthopaedic leather lining, thickness from 1.0 to 1.4 mm

TOE-PROTECTION CAP

high & wide FreeToes toe cap in steel, with flexible transition lip

INSOLE

genuine leather, herbal tanned, thickness from 2.4 - 2.7 mm

CUSHION

replaceable cushion inlay with spherical heel and distinct arch support, anatomically

SOLE

formed, moisture regulating, respiratory active, antibacterial & washable

SOFT-STEP-PRO double layer sole (TPU/PUR)

outer sole made of compact TPU

midsole of shock-absorbing, foamed PUR

antistatic

oil and fuel resistant

slip resistant (SRC) according to EN ISO 20347:2012

heat resistant up to 120°C

SIZES

36 – 42



Order number

3283 (S3)

Model
Norm

ALLROUND ESD HS S3

EN ISO 20345:2011

ÖNORM Z 1259:2017/DGUV 112-191

Protective function



CI-SRC



Order number

3483 (S3)

Model
Norm

ALLROUND ESD KH S3

EN ISO 20345:2011

ÖNORM Z 1259:2017/DGUV 112-191

Protective function



CI-SRC



THE **SAFETY SHOE** WITH **MANIFOLD** POSSIBLE USES



The safety shoe with manifold possible uses in tried and tested leather material with our DUO-PLUS sole offers ideal comfort and protection for people in various areas of use.

THE NAME SAYS IT ALL.



FEATURES



DESCRIPTION

UPPER LEATHER

hard-wearing full cowhide leather, hydrophobic, thickness 1.9 - 2.1 mm

LINING LEATHER

natural, perforated orthopaedic leather lining, thickness from 1.0 to 1.4 mm

TOE-PROTECTION CAP

high & wide FreeToes toe cap in steel, with flexible transition lip

INSOLE

genuine leather, herbal tanned, thickness from 2.4 - 2.7 mm

CUSHION

replaceable cushion inlay with spherical heel and distinct arch support, anatomically formed, moisture regulating, respiratory active, antibacterial & washable

SOLE

SOFT-STEP-PRO double layer sole (TPU/PUR)

outer sole made of compact TPU

midsole of shock-absorbing, foamed PUR

antistatic

oil and fuel resistant

slip resistant (SRC) according to EN ISO 20347:2012

heat resistant up to 120°C

SIZES

36 - 48



Order number

7782 (S1)

**Model
Norm**

KOMFORT ESD SA S1

EN ISO 20345:2011

ÖNORM Z 1259:2017/DGUV 112-191

Protective function



Order number

7682 (S2)

**Model
Norm**

KOMFORT ESD HS S2

EN ISO 20345:2011

ÖNORM Z 1259:2017/DGUV 112-191

Protective function



Order number

7482 (S2)

**Model
Norm**

KOMFORT ESD KH S2

EN ISO 20345:2011

ÖNORM Z 1259:2017/DGUV 112-191

Protective function



THE **SAFETY SHOE** WITH **MORE COMFORT**



The lightweight full-leather shoe from our **„FEEL GOOD“ PROGRAMME** for all fields of industry and trade. The shoe with the fashionable look has deliberately not been equipped with textile lining, because the full leather shoe guarantees the best environment for your feet and utmost wearing comfort. The comfort group is also available puncture proof.



FEATURES



DESCRIPTION

UPPER LEATHER

high-quality full cowhide and nubuck leather, hydrophobic, thickness approx. 1.9 mm

LINING LEATHER

natural, perforated orthopaedic leather lining, thickness from 1.0 to 1.4 mm

TOE-PROTECTION CAP

high & wide FreeToes toe cap in steel, with flexible transition lip

INSOLE

genuine leather, herbal tanned, thickness from 2.4 - 2.7 mm

CUSHION

replaceable cushion inlay with spherical heel and distinct arch support, anatomically formed, moisture regulating, respiratory active, antibacterial & washable

SOLE

SOFT-STEP-PRO double layer sole (TPU/PUR)

nitrile rubber mould (slip resistant, microbe and acid resistant, oil and fuel resistant)

outer sole made of compact TPU

midsole of shock-absorbing, foamed PUR

antistatic

oil and fuel resistant

slip resistant (SRC) according to EN ISO 20347:2012

heat resistant up to 120°C

SIZES

38 – 48

PLEASE SAY WELCOME TO





COMING SOON

**S schütze
schuhe**

MADE IN AUSTRIA - SINCE 1925



Order number

5243 (S3)

**Model
Norm**

TREAKER® ESD HS S3

EN ISO 20345:2011

ÖNORM Z 1259:2017/DGUV 112-191

Protective function



CI-HRO-SRC



Order number

5443 (S3)

**Model
Norm**

TREAKER® ESD KH S3

EN ISO 20345:2011

ÖNORM Z 1259:2017/DGUV 112-191

Protective function



CI-HRO-SRC



A MIX OF 2 WORLDS - IT'S ALL IN THE NAME



It is not easy to reinvent safety shoes. For that very reason, we have developed the TREAKER®. Part TREKKING shoe, part SNEAKER, combined with sophisticated orthopaedic qualities, it will not disappoint your employees.



FEATURES



DESCRIPTION

UPPER LEATHER LINING

high-quality cowhide & Microfaser, thickness approx. 1,9 - 2,2 mm
natural, perforated orthopaedic leather lining, thickness from 1.0 to 1.4 mm

TOE-PROTECTION CAP CUSHION

high & wide FreeToes toe cap in steel, with flexible transition lip
replaceable cushion inlay with spherical heel and distinct arch support, anatomically formed, moisture regulating, respiratory active, antibacterial & washable

INSOLE SOLE

puncture proof, metal-free fabric
DUO-SOFT-GRIP Sole (Rubber-PUR)
special profile with 175 sharp-edged studs (total edge length of 8 m with size 43)
nitrile rubber mould (slip resistant, wear resistant, contact heat resistant up to 300°C, microbe and acid resistant, oil and fuel resistant)
polyurethane foam body (lightweight, shock absorbent, permanently elastic)
heat and cold insulated according to EN ISO 20347:2012 (HI-CI)
contact heat resistant up to 300°C according to EN ISO 20347:2012 (HRO)
extremely slip resistant (SRC) according to EN ISO 20347:2012
antistatic, puncture-proof stainless steel inlay

SIZES

38 - 48



Order number

7713 (S1P)

**Model
Norm**

KOMFORT ESD SA S1P

EN ISO 20345:2011

ÖNORM Z 1259:2017/DGUV 112-191

Protective function



HI-CI-HRO-SRC



Order number

7213 (S1P)

**Model
Norm**

KOMFORT ESD HS S1P

EN ISO 20345:2011

ÖNORM Z 1259:2017/DGUV 112-191

Protective function



HI-CI-HRO-SRC



Order number

7613 (S3)

**Model
Norm**

KOMFORT ESD HS S3

EN ISO 20345:2011

ÖNORM Z 1259:2017/DGUV 112-191

Protective function



HI-CI-HRO-SRC



Order number

7413 (S3)

**Model
Norm**

KOMFORT ESD KH S3

EN ISO 20345:2011

ÖNORM Z 1259:2017/DGUV 112-191

Protective function



HI-CI-HRO-SRC



THE **SAFETY SHOE** WITH **MORE COMFORT**



The lightweight full-leather shoe from our **„FEEL GOOD“ PROGRAMME** for all fields of industry and trade. The shoe with the fashionable look has deliberately not been equipped with textile lining, because the full leather shoe guarantees the best environment for your feet and utmost wearing comfort. The comfort group is also available puncture proof.



FEATURES



DESCRIPTION

UPPER LEATHER

high-quality full cowhide and nubuck leather, hydrophobic, thickness approx. 1.9 mm

LINING LEATHER

natural, perforated orthopaedic leather lining, thickness from 1.0 to 1.4 mm

TOE-PROTECTION CAP

high & wide FreeToes toe cap in steel, with flexible transition lip

INSOLE

puncture proof, metal-free fabric

CUSHION

replaceable cushion inlay with spherical heel and distinct arch support, anatomically formed, moisture regulating, respiratory active, antibacterial & washable

SOLE

DUO SOFT-ACTIVE sole (rubber PU), SEALING SOLE EDGE SYSTEM patent nr. 403677
nitrile rubber mould (slip resistant, microbe and acid resistant, oil and fuel resistant)
polyurethane foam body (lightweight, shock absorbent, permanently elastic)
the high mould guarantees good moisture protection
antistatic
heat and cold insulated according to EN ISO 20345:2011 (HI-CI)
contact heat resistant up to 300°C according to EN ISO 20345:2011 (HRO)
optimal shock absorbent in the heel area and excellent roll properties

SIZES

38 – 48



Order number

6213 (S3)

Model
Norm

BAUPROFI HS S3
EN ISO 20345:2011
ÖNORM Z 1259:2017/DGUV 112-191

Protective function

S3

HI-CI-HRO-SRC



Order number

6413 (S3)

Model
Norm

BAUPROFI KH S3
EN ISO 20345:2011
ÖNORM Z 1259:2017/DGUV 112-191

Protective function

S3

HI-CI-HRO-SRC



INTENDED FOR CONSTRUCTING, MADE FOR CONSTRUCTING



This model range is tailored to the needs of the construction industry. **SCHÜTZE-SPECIAL-LEATHER** quality, with special triple log seams as well as high-quality interior fittings, good grip and excellent wearing comfort offer ideal protection for your feet.



FEATURES



DESCRIPTION

UPPER LEATHER

RUBBER-PROTECTOR

LINING LEATHER

TOE-PROTECTION CAP

INSOLE

CUSHION

SOLE

water, oil and dirt resistant genuine leather in special quality, thickness approx. 2.1 mm
of wear-resistant nitrile rubber in front and rear boots segment
natural, perforated orthopaedic leather lining, thickness from 1.0 to 1.4 mm
high & wide FreeToes toe cap in steel, with flexible transition lip
genuine leather, herbal tanned, thickness from 2.4 - 2.7 mm
replaceable cushion inlay with spherical heel and distinct arch support, anatomically formed, moisture regulating, respiratory active, antibacterial & washable
DUO SOFT-ACTIVE sole (rubber PU), SEALING SOLE EDGE SYSTEM patent nr. 403677
nitrile rubber mould (slip resistant, microbe and acid resistant, oil and fuel resistant)
polyurethane foam body (lightweight, shock absorbent, permanently elastic)
the high mould guarantees good moisture protection
antistatic, puncture-proof stainless steel inlay
heat and cold insulated according to EN ISO 20345:2011 (HI-CI)
contact heat resistant up to 300°C according to EN ISO 20345:2011 (HRO)
optimal shock absorbent in the heel area and excellent roll properties

SIZES

39 - 50



Order number

8313 (S3)

Model
Norm

TOP TECH 4 PLUS KH S3

EN ISO 20345:2011

ÖNORM Z 1259:2017/DGUV 112-191

Protective function

S3

HI-CI-HRO-SRC



WINTER BOOTS
with real lambskin

Order number

8513 (S3)

Model
Norm

TOP TECH 4 PLUS WINTER ST S3

EN ISO 20345:2011

ÖNORM Z 1259:2017/DGUV 112-191

Protective function

S3

HI-CI-HRO-SRC

FEATURES



permair®leather
porvair
advanced materials

3M Scotchlite™
Reflective Material

4x ADVANTAGE IN

PLUS comfort:

- Special water-proof breathable upper leather
- Leather lining and leather insole
- Replaceable orthopaedic cushion inlay
- Shock absorbing rubber PU sole construction

PLUS safety:

- Reflective back strap
- Resistant to chemical substances
- Heat and cold insulating substructure
- Slip resistant and self-cleaning sole profile

PLUS durability:

- No side seams (one-piece shaft)
- Highly abrasion resistant upper leather
- Highly abrasion resistant bump cap
- Heat, manure, microbe and hydrolysis resistant shell sole

PLUS material & converting:

- **schüzeschuhe** ENGINEERING
- **3M** Scotchlite™ Reflective Material
- **porvair** advanced materials
- permair®leather

THE **RIGHT SHOE** FOR THE **TOUGHEST CONDITIONS**

permair®leather



Permair® Leather Protector exceeds the requirements for safety shoes according to the European Standard EN ISO 20345, the American Standard ASSI Z41 and the Canadian Standard CSAZ 195-M92.

Different from usual leather, Protector provides contrasting properties, such as breathability, absolutely water tight and chemical resistance. Therefore its material properties are incomparably good even at hazardous work places. It is best suited for most adverse conditions thanks to its incomparable material properties.

DESCRIPTION

UPPER LEATHER

Permair® Leather Protector, special water-proof, breathable upper leather, extremely wear-and acid-resistant, thickness approximately 2.0 mm

RUBBER-PROTECTOR

of wear-resistant nitrile rubber in front boots segment

LINING

natural, perforated orthopaedic leather lining, thickness from 1.0 to 1.4 mm

TOE-PROTECTION CAP

high & wide FreeToes toe cap in steel, with flexible transition lip

INSOLE

genuine leather, herbal tanned, thickness from 2.4 - 2.7 mm

CUSHION

replaceable cushion inlay with spherical heel and distinct arch support, anatomically formed, moisture regulating, respiratory active, antibacterial & washable

SOLE

DUO SOFT-ACTIVE sole (rubber PU), SEALING SOLE EDGE SYSTEM patent nr. 403677

nitrile rubber mould (slip resistant, microbe and acid resistant, oil and fuel resistant)

polyurethane foam body (lightweight, shock absorbent, permanently elastic)

the high mould guarantees good moisture protection

heat and cold insulated according to EN ISO 20345:2011 (HI-CI)

contact heat resistant up to 300°C according to EN ISO 20345:2011 (HRO)

antistatic

puncture-proof stainless steel inlay

optimal shock absorbent in the heel area and excellent roll properties

SIZES

39 - 50



Order number

6813 (S3)

Model
Norm

STAHLBAUPROFI KH S3

EN ISO 20345:2011

ÖNORM Z 1259:2017/DGUV 112-191

Protective function

S3

HI-CI-HRO-SRC



FEATURES



THE BEST SOLUTION FOR METALWORKING



SCHÜTZE STEELERS-PRO has been especially developed for employees in metalworking. The demand for durable shoes with increased wearing comfort has grown bigger and bigger. This shoe provides special seams in heat and flame resistant **NOMEX®** material as well as a nitrile sole with a contact heat resistance of up to 300 degrees Celsius fulfilling all demands in metalworking.



DESCRIPTION

UPPER LEATHER
RUBBER-PROTECTOR
LINING
TOE-PROTECTION CAP
CUSHION

EXTRAS
INSOLE
SOLE

water, oil and dirt resistant genuine leather in special quality, thickness approx. 2.1 mm
of wear-resistant nitrile rubber in front and rear boots segment
natural, perforated orthopaedic leather lining, thickness from 1.0 to 1.4 mm
high & wide FreeToes safety toe cap in steel, with flexible transition lip
replaceable cushion inlay with spherical heel and distinct arch support, anatomically formed, moisture regulating, respiratory active, antibacterial & washable
Seams and shoelaces in flame resistant NOMEX® material
genuine leather, herbal tanned, thickness from 2.4 - 2.7 mm
DUO SOFT-ACTIVE sole (rubber PU), SEALING SOLE EDGE SYSTEM patent nr. 403677
nitrile rubber mould (slip resistant, microbe and acid resistant, oil and fuel resistant)
polyurethane foam body (lightweight, shock absorbent, permanently elastic)
the high mould guarantees good moisture protection
optimal shock absorbent in the heel area and excellent roll properties
antistatic
contact heat resistant up to 300°C according to EN ISO 20345:2011 (HRO)
heat and cold insulated according to EN ISO 20345:2011
puncture-proof stainless steel inlay

SIZES

39 - 48



Order number

6432 (S2)

Model
Norm

ASPHALTPROFI KH S2

EN ISO 20345:2011

ÖNORM Z 1259:2017/DGUV 112-191

Protective function

S2

HI-CI-HRO



Order number

6232 (S2)

Model
Norm

ASPHALTPROFI HS S2

EN ISO 20345:2011

ÖNORM Z 1259:2012/DGUV 112-191

Protective function

S2

HI-CI-HRO

THE SOLUTION **FOR WORK ON HOT SURFACES**



The only safety shoe that earns money. Why?

The answer is quite simple:

SCHÜTZE ASPHALT-PROFI is the only shoe enabling your employees to work on hot asphalt for more than an hour without putting their health and/or safety at risk.

DO YOU KNOW ANOTHER ONE?



FEATURES



DESCRIPTION

UPPER LEATHER LINING LEATHER TOE-PROTECTION CAP CUSHION

water, oil and dirt resistant genuine leather in special quality, thickness approx. 2.1 mm
natural, perforated orthopaedic leather lining, thickness from 1.0 to 1.4 mm
high & wide FreeToes toe cap in steel, with flexible transition lip
replaceable cushion inlay with spherical heel and distinct arch support, anatomically formed, moisture regulating, respiratory active, antibacterial & washable
genuine leather, herbal tanned, thickness from 2.4 - 2.7 mm
DUO-SOFT ASPHALT sole (rubber-PUR)
SEALING SOLE EDGE SYSTEM patent nr. 403677
nitrile rubber mould (slip resistant, microbe and acid resistant, oil and fuel resistant)
polyurethane foam body (lightweight, shock absorbent, permanently elastic)
well insulated with special heat resistant fibre material
heat and cold insulated according to EN ISO 20345:2011 (HI-CI)
contact heat resistant up to 300°C according to EN ISO 20345:2011 (HRO)

INSOLE SOLE

SIZES

40 - 48



Perfect slip resistance due to special rubber and new grip profile

Perfect comfort due to new orthopaedic leather lining and leather insole

Perfect durability due to a new upper part without lateral seams

Perfect wearing properties due to best flexibility of the sole

Perfect weight due to a lightweight PUR sole core.

Order number

4343 (S3)/ **4346** (O3)

Model

DACHDECKERPROFI KH S3
DACHDECKERPROFI KH O3

Norm

EN ISO 20345:2011 (4343)
EN ISO 20347:2012 (4346)
ÖNORM Z 1260 (4346)
ÖNORM Z 1259:2017/DGUV 112-191

Protective function

S3

CI-HRO-SRC

O3

CI-HRO-SRC

THE MEASURE OF ALL THINGS FOR WORKING ON ROOFS



Optimal slip resistance due to special rubber and a new grip profile, optimal comfort due to new orthopaedic leather lining and a leather insole, optimal durability due to a new upper part without lateral seams, optimal wearing properties due to best flexibility of the sole, optimal weight due to a lightweight PUR sole core.



FEATURES



ORTHOPAEDIC
LEATHER
LINING



ANATOMIC
3D INSOLE



FREE TOES



FIT



PROTECTOR



S/L/XL
MEHRWEITEN
CUSTOM FIT
SYSTEM



PSA 4.0
READY

DESCRIPTION

UPPER LEATHER LINING

Suede leather in core split, hydrophobic, imbued, thickness approximately 2.0 mm
natural, perforated orthopaedic leather lining, thickness from 1.0 to 1.4 mm

TOE-PROTECTION CAP

Only with model 4323 (S3) high & wide FreeToes safety toe cap in steel,
with flexible transition lip

CUSHION

replaceable cushion inlay with spherical heel and distinct arch support, anatomically
formed, moisture regulating, respiratory active, antibacterial & washable

INSOLE SOLE

genuine leather, herbal tanned, thickness from 2.4 - 2.7 mm

DUO-SOFT-GRIP Sole (Rubber-PUR)

special profile with 175 sharp-edged studs (total edge length of 8 m with size 43)

nitrile rubber mould (slip resistant, wear resistant, contact heat resistant up to 300°C,
microbe and acid resistant, oil and fuel resistant)

polyurethane foam body (lightweight, shock absorbent, permanently elastic)

heat and cold insulated according to EN ISO 20347:2012 (HI-CI)

contact heat resistant up to 300°C according to EN ISO 20347:2012 (HRO)

extremely slip resistant (SRC) according to EN ISO 20347:2012

antistatic, puncture-proof stainless steel inlay

SIZES

39 - 48

SCHÜTZE > <

SCHÜTZE-ANATOMIC-3D-INSOLE

replaceable cushion inlay with spherical heel and distinct arch support, anatomically formed, moisture regulating, respiratory active, antibacterial & washable



Order number: **E 1 DRY TECH** + Gr. xx
E 1 DRY TECH SMALL + Gr. xx



Order number: **E 1 DRY TECH GEL** + Gr. xx

ACCESSORIES

SCHÜTZE-SHOE LACES

Selected quality shoe laces round off our range of accessories.



L 100 cm - Order number: **B HOCH DD**
L 120 cm - Order number: **B HOCH TOPTECH**
Suitable for models 4343, 4346, 8313, 8513



L 90 cm - Order number: **B HALB ASPHALT**
L 105 cm - Order number: **B HOCH ASPHALT**
Suitable for models 6232, 6432



L 80 cm - Order number: **B HALB KOMFORT**
L 120 cm - Order number: **B HOCH KOMFORT**
Suitable for models 7682(13), 7213, 7482(13)



L 90 cm - Order number: **B HALB BAU**
L 105 cm - Order number: **B HOCH BAU**
Suitable for models 6213, 6413



L 90 cm - Order number: **B HALB SPORTIV**
L 115 cm - Order number: **B HOCH SPORTIV**
Suitable for models 1182(83), 1383

L 90 cm - Order number: **B HALB TREAKER**
L 115 cm - Order number: **B HOCH TREAKER**
Suitable for models 5243, 5443



L 90 cm - Order number: **B HALB ALLROUND**
L 105 cm - Order number: **B HOCH ALLROUND**
Passend für Modelle 3283, 3483

L 90 cm - Order number: **B HALB FEELING**
Suitable for model 2282



L 110 cm - Bestellnummer: **B NOMEX**
Suitable for model 6813



LOCATION
TRAGWEIN/AUSTRIA



STANDARDS, CLASSIFI- <CATION & IDENTI- <FICATION

STANDARDS RULE TEST METHODS AND PROVIDE INFORMATION ON THE REQUIRED STRUCTURE OF A SHOE. SHOES FOR COMMERCIAL USE ARE SUBJECT TO STANDARDS.

The following standards are relevant in the shoe segment:

EN ISO 20344 - Test methods



EN ISO 20345 - Safety shoes

EN ISO 20346 - Protective shoes

EN ISO 20347 - Professional shoes

SAFETY SHOES ACCORDING TO EN ISO 20345:2011 WITH TOE-PROTECTION CAP (TEST ENERGY 200 JOULE) ARE AVAILABLE IN THE FOLLOWING DESIGNS

- SB** Basic requirements, can be classification I & II
- S1** Additional requirements (A+FO+E), must be classification I
- S1P** Additional requirements (A+FO+E+P), must be classification I
- S2** like S1, in addition partial watertightness (A+FO+E+WRU), must be classification I
- S2** like S2, in addition puncture proof (A+FO+E+WRU+P), must be classification I
- S4** like S1, but as watertight boot, must be classification II
- S5** like S4, in addition puncture proof, must be classification II

SAFETY SHOES CAN HAVE THE FOLLOWING ADDITIONAL TESTS:

- A** Antistatic shoes
- C** Conductive shoes
- E** Energy absorption in the heel area
- P** Puncture resistance
- CI** Cold insulation
- HI** Heat insulation
- FO** Oil and fuel resistant sole
- HRO** Reaction on contact heat
- SRA** Slip resistance (test method: ceramic tile/detergent)
- SRB** Slip resistance (test method: steel floor/glycerol)
- SRC** Slip resistance (test method: SRA and SRB passed)
- WR** Resistance of the whole shoe to water penetration and absorption
- WRU** Resistance of the upper to water penetration and absorption

CLASSIFICATION I & II

- I.** Shoes in leather or other materials, except any rubber or polymere material
- II.** All rubber and polymere materials

LABELLING

Each pair of safety shoes must be marked clearly and durably with the following information, for example by stamping or embossing. Example SCHÜTZE-STEELER's-PRO, MODEL 6813

- a) size
- b) the manufacturer's trademark
- c) the manufacturer's type designation
- d) date of manufacture and indication of the quarter at least
- e) the number of the European Standard, i.e. EN ISO 20345:2011
- f) symbols for the respective protective function or, if required, the corresponding category (SB, S1 ... S5)



* SAMPLE

ORTHOPED

Safety and professional shoes are part of the personal protective equipment (PPE) by law, must be subject to a type examination and carry the CE mark.

Any kind of later change is not admissible, because then the shoes do not correspond to the type examination certificate of the underlying type anymore and consequently the compliance with standards, the validity of the CE mark and the legal security for employers and employees will be lost.

In order to provide standard compliant safety and professional shoes to people needing orthopaedic care, the national standard ÖNORM Z 1259 was set up in Austria. This standard is a processing standard, which rules the production, conformity assessment and the marketing of orthopaedic safety and professional shoes.

The ÖNORM Z 1259 is a national standard and only valid in Austria. The Employer's Liability Insurance Associations in Germany have defined the directive DGUV 112-191 (former BGR 191), which provides indications to the employer, on how he can reach his protection targets and is only applicable in Germany.

SOLUTION APPROACH

According to the new ÖNORM Z 1259 there is the possibility to use so-called „modular orthopaedic systems“. These modular systems include, besides the shoes or semi-finished product, all parts, which are necessary for the modification of the shoes as well as all necessary documents and individually designed manufacturing specifications.

The producer of the modular system submits prototypes with the minimum and maximum design of orthopaedic modification of the shoe to a notified test institution for the type examination procedure.

Both, the minimum and the maximum version are tested according to EN ISO 20345:2011 (safety shoes) or EN ISO 20347:2012 (professional shoes). If the test result is positive, it is assumed that all modifications between the minimum and maximum version also comply with the requirements of the standard. This offers the possibility of customized adaptations.

THERE ARE 3 DIFFERENT VERSIONS OF ORTHOPAEDIC SAFETY SHOES:

Version A

Safety shoes with adapted insoles (finished model), approx. 90 %

Version B

Modular system (semi-finished model) for adaptation (posture compensation, height correction, etc.), approx. 5 %.

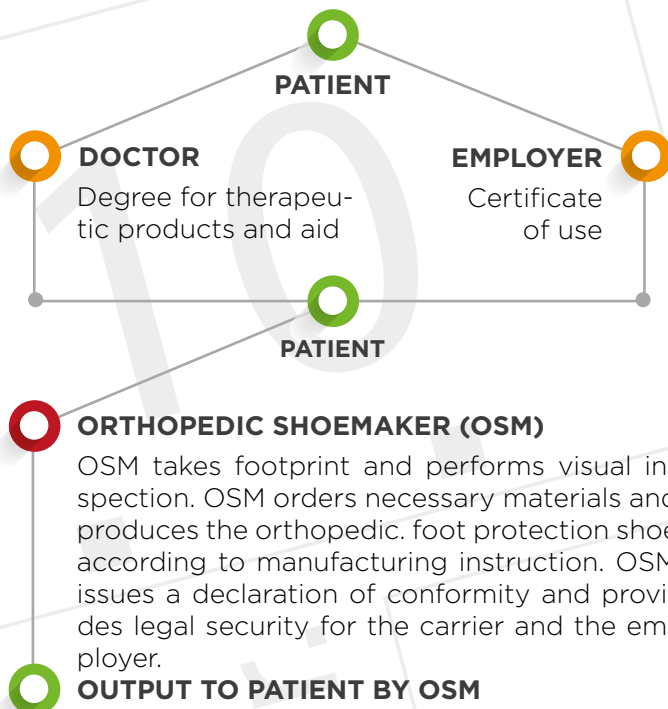
Version C

Modular system for individual adjustment of safety shoes (custom-made shoes), approx. 5 %

After having obtained the EC type examination certificate, every duly qualified orthopaedic specialist is entitled to finish safety and professional shoes upon approval by the modular system producer according to the defined specifications in a standard-compliant manner and mark them independently according to ÖNORM Z 1259.

IC > < ÖNORM Z 1259

In cooperation with the orthopaedic specialist **MED-WALKER**, we have developed the standard-tested modular system **SCHÜTZEMED** according to ÖNORM Z 1259, which enables the orthopaedic shoemaker to carry out orthopaedic adjustments to safety shoes within the valid standards. Safety shoes manufactured according to ÖNORM Z 1259 provide legal security for the employer as well as for the orthopaedic shoemaker and offer suitable orthopaedic safety shoes to the employer.



SCHÜTZEMED

THE SAFE SOLUTION FOR
ORTHOPEDIC FOOT PROTECTION



More information about **SCHÜTZEMED**
and orthopedic shoemakers see:

<https://www.schuetzemed.com>

CONTACT FOR OSM

Stockinger GmbH

Steiffstraße 1

A-4710 Grieskirchen

Phone: +43 (0)7248/63775-0

Fax +43 (0)7248/63775-55

E-Mail: office@stockinger.co.at

<http://www.stockinger.co.at>

TRUST & CONFIDE

*„THE **SCHÜTZE-SERVICE-PACKAGE** IS LARGE,
THEREFORE WE NEED A LOT OF SPACE!“*



*„For many years **SCHÜTZE-SCHUHE** has been a reliable partner for the **ADLER** factory in the matter of professional footwear. We are not only convinced by function, comfort and compliance with all legal requirements, but also by the fact that **SCHÜTZE-SCHUHE** produces in Austria. Moreover the field service scores with good on-site support and rapid availability of the products.“*

ADLER
In unseren Adlern bleibt Farbe.

Eva Saxl
ADLER-Werk paint factory, Schwaz

BAU

ANDRITZ
Hydro

pfeiffer
Logistik


MORANDELL

FILL

ENGEL



Wir leben Autos.

HABAU


OFFNER
HOLZ

HASSLACHER
NORICA TIMBER

 **HELD &
FRANCKE**

voestalpine
EINEN SCHRITT VORAUSS.

M M
MAYR MELNHOF HOLZ

 **MAGNA**
MAGNA POWERTRAIN

 **ELK**
HÄUSER FÜR'S LEBEN

josko
FENSTER & TÜREN

KTM

LINZ AG
www.linzag.at | Lebensqualität für Sie.


PREMIUM SINCE 1854

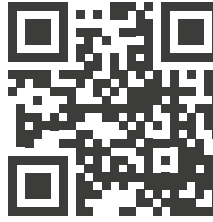
OBERNDORFER
DIE ZUKUNFT DES BAUENS.

STRABAG


SWIETELSKY

TEAM 7

**UND
VIELE
WEITERE**



SCHÜTZE-SCHUHE GmbH
Pregartener Straße 15
4284 Tragwein, **Austria**

Phone +43 7263 88 323
Fax: +43 7263 88 323 7
E-Mail: office@schuetze-schuhe.at
Web: **www.schuetze-schuhe.at**

International sales partner:
www.schuetze-schuhe.at

